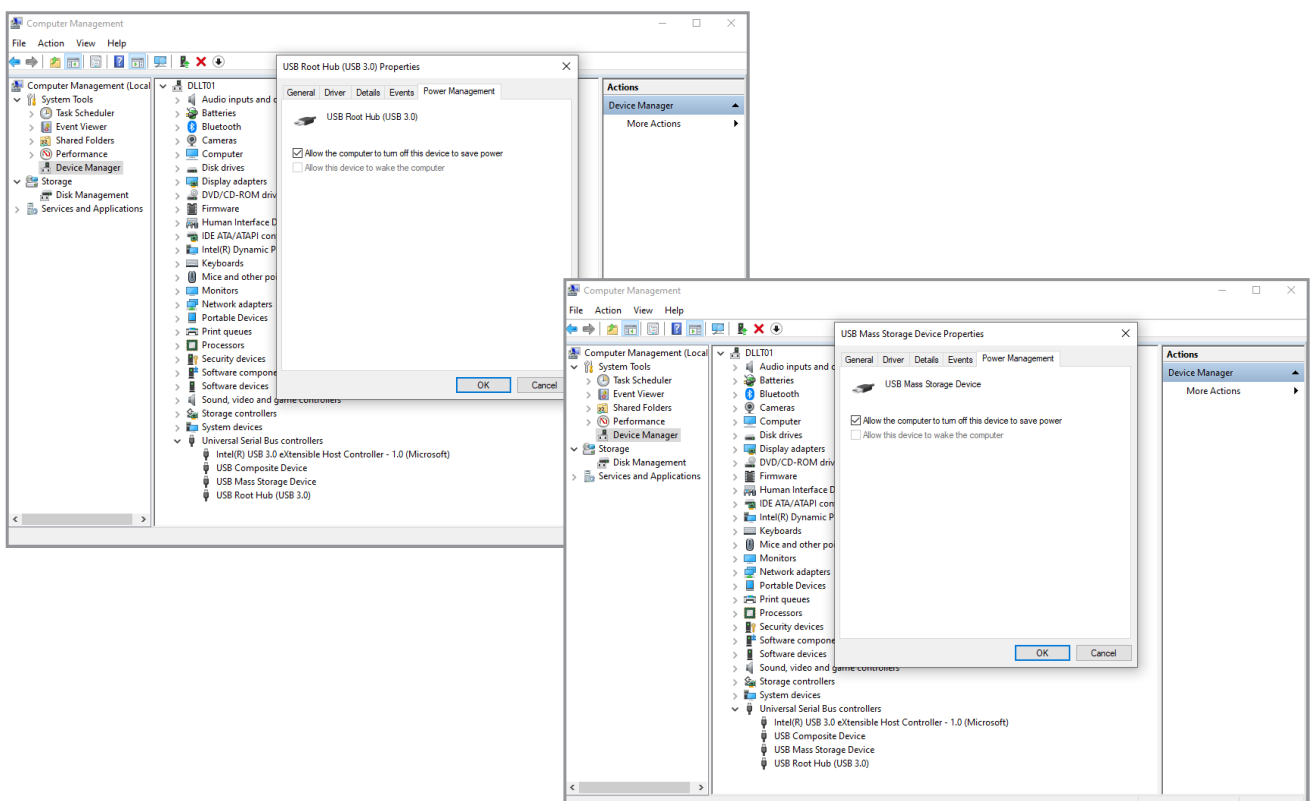


Power Management in Windows and macOS for SecureDrives.

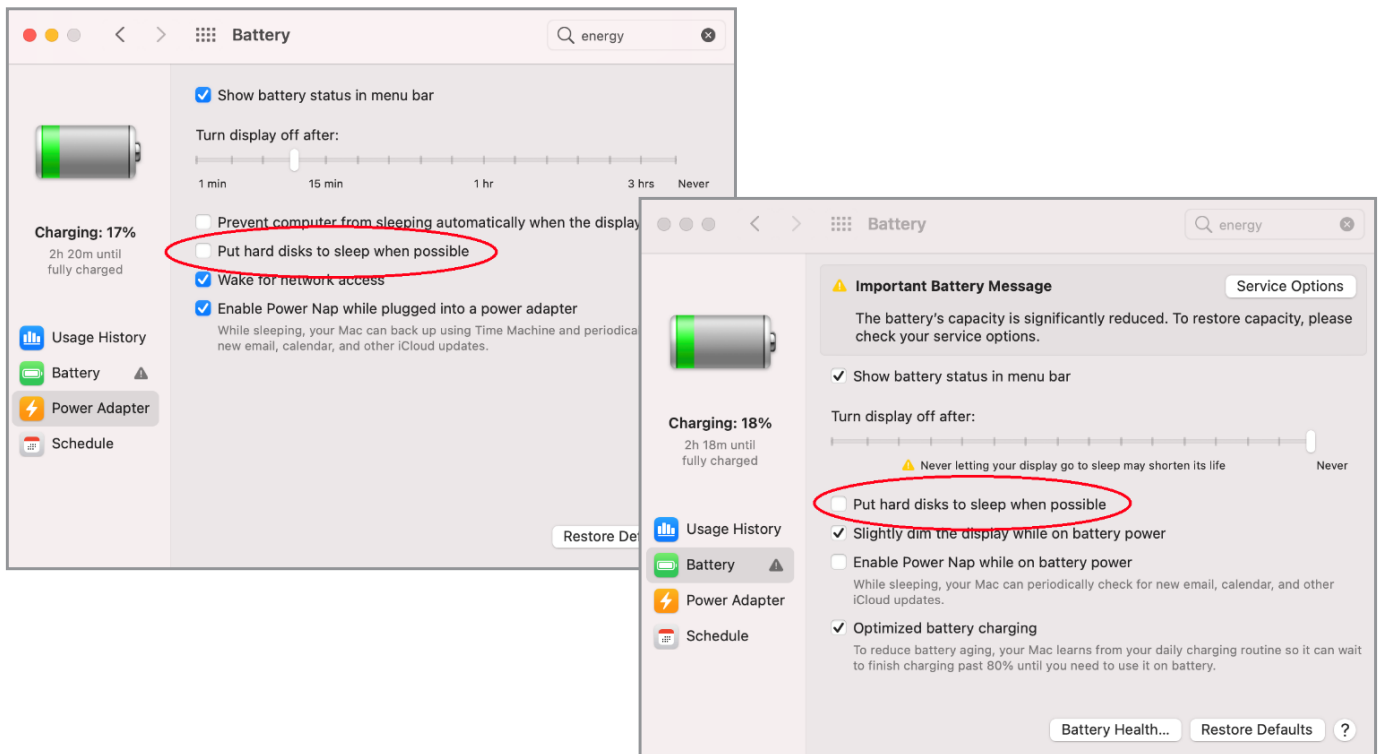
Windows

1. Plug in the drive to your PC but keep it locked
2. Open Device manager
3. Scroll down to “Universal Serial Bus controllers” and click the drop down.
4. Right click on “USB Root Hub” > Click Properties > “Power Management”
5. Uncheck the box “Allow the computer to turn off this device to save power”
6. Repeat for each USB Root Hub
7. Navigate back to Device Manager
8. Unlock SecureDrive
9. Once the drive unlocks and mounts, the Device Manager screen will refresh
10. Once the screen refreshes, click the “Universal Serial Bus controllers” drop down. You will then see “USB Mass Storage Device”
11. Right click on the device > Click “Properties” > “Power Management”, then uncheck the box “Allow the computer to turn off this device to save power”



macOS

1. Open System Preferences
2. If you have the Big Sur operating system, open “Battery”. For the options “Battery” and “Power Adapter” uncheck “Put Hard Disks to Sleep When Possible”
3. If you have an earlier macOS, open “Energy Saver”. For the options “Battery” and “Power Adapter” uncheck “Put Hard Disks to Sleep When Possible”



Older macOS

